



FEATURES

- Single phase, dry type, submersible 2 pole induction motor.
- Class 'E' motor insulation.
- Low maintenance cost.

Anti-wicking cable entry

Anti-wicking cable connectors prevent water from entering the motor through the cable wire.

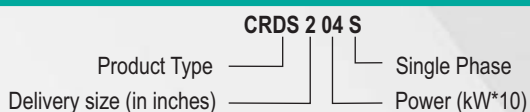
Durability

- Wear parts are made of abrasion resistant materials ensuring durability.
- Semi vortex impellers made of urethane rubber ensure durability and performance.
- Dual silicon carbide mechanical seals ensure durability.
- Oil lifters extend the life of the mechanical seals by providing efficient lubrication and cooling.
- Double shielded, permanently lubricated, high temperature, deep groove, ball bearings extend operational life.

PRODUCT DATA

- Power range : 0.5HP, Single Phase, 220V, 50Hz
- Head range : 2m to 12m
- Discharge range : Max. 6.6m³/hr
- Solid handling size : Max. 3mm
- Delivery size : 50mm

PRODUCT IDENTIFICATION



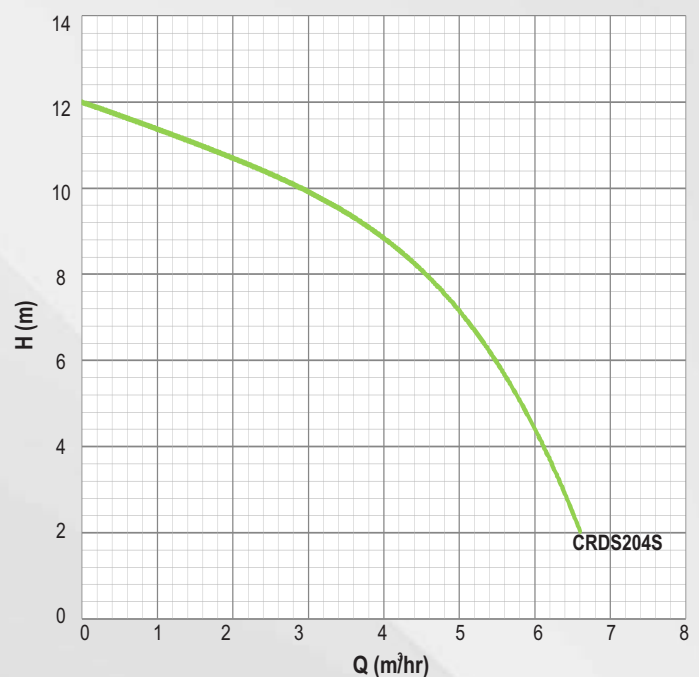
AQUATEX CRDS pumps have the unique characteristic of draining water down to the very bottom (upto 1 mm).

APPLICATIONS

- Removing water from flat surfaces such as underground sumps, swimming pools, and fish tanks.
- Removing curing water while laying a concrete floor.
- Removing water from basements, rooftops, parking lots, service and utility pits.



PERFORMANCE CURVE

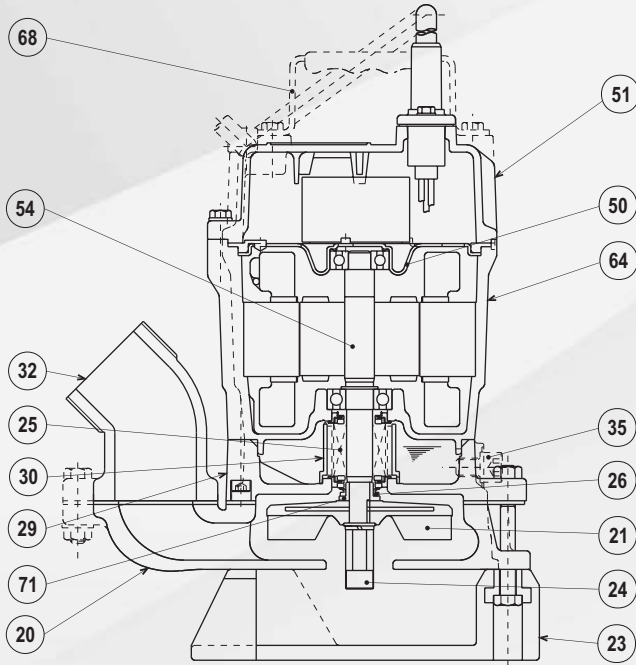


CRDS Series

Single Phase Portable Submersible Residual Water Drainage Pumps



MATERIALS OF CONSTRUCTION



Part No.	Component	Material
20	Pump Casing	CI
21	Impeller	Urethane Rubber
23	Suction Strainer	PVC
24	Agitator	Ductile CI
25	Mechanical Seal	Silicon Carbide
26	V-Ring	Nitrile Rubber
29	Oil Casing	CI
30	Oil Lifter	Resin
32	Hose Coupling	CI
35	Oil Plug	SS, AISI 304
50	Motor Bracket	Galvanised Steel
51	Motor Head Cover	Aluminium Alloy
54	Shaft	SS, AISI 403
64	Motor Housing	Aluminium Alloy
68	Handle	Steel + Nitrile Rubber
71	Shaft Sleeve	SS, AISI 304

DIMENSIONS AND WEIGHT

Pump Type	Power		Dimensions (in mm)			Weight
	HP	kW	A	B	øD	kg
CRDS204S	0.5	0.4	282	271	50	10.8

