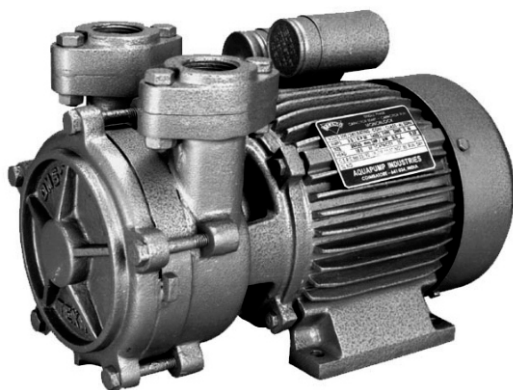


TEXMO[®]



SELF PRIMING SIDE CHANNEL MONOBLOCK



INSTALLATION / SPARE PARTS MANUAL

MANUFACTURED BY:

AQUAPUMP INDUSTRIES

TUDIYALUR POST,
COIMBATORE - 641 034. INDIA

TEXMO SIDE CHANNEL MONOBLOCK

INSTALLATION :

The monoblock should be installed in a place relatively free from dust, fumes and moisture. The vertical distance between the water level at the suction side and the pump should not exceed 26 feet (8 meters). The Monoblock should be connected to a single phase 50 Cycles AC supply with Voltage ranging from 200-240 Volts. The supply leads are to be connected to the Monoblock terminals marked A1 & A2. The terminal provided at the monoblock base should be properly earthed. Supply leads should be sufficient in size (atleast 3/20 size wire) so that there will be no voltage drop in the leads. These side channel monoblocks are intended for use only with clean liquids free from mud, grit, solids etc. The suction pipe should be fitted with a strainer so that no foreign matter will enter. If the strainer is choked, or too small strainer is used, it will reduce the discharge.

PRECAUTIONS:

1. Before starting the Monoblock for the first time, it should be filled with water.
2. The Monoblock should be run for a few minutes once every 3 days to prevent the pump from seizing due to rust build up.
3. If the impeller seizes, slightly loosen the pump tie-bolts (Part No. 27) and rotate the motor shaft from the back with a screw driver to release the impeller.
4. Muddy water will damage the pump. The bottom of the suction pipe should be atleast 1 foot above the bottom of the well or tank to prevent mud from the bottom being sucked into the pump. Also after cleaning the tank, the resulting muddy water should not be pumped out by means of the monoblock. It should be taken out by other means.

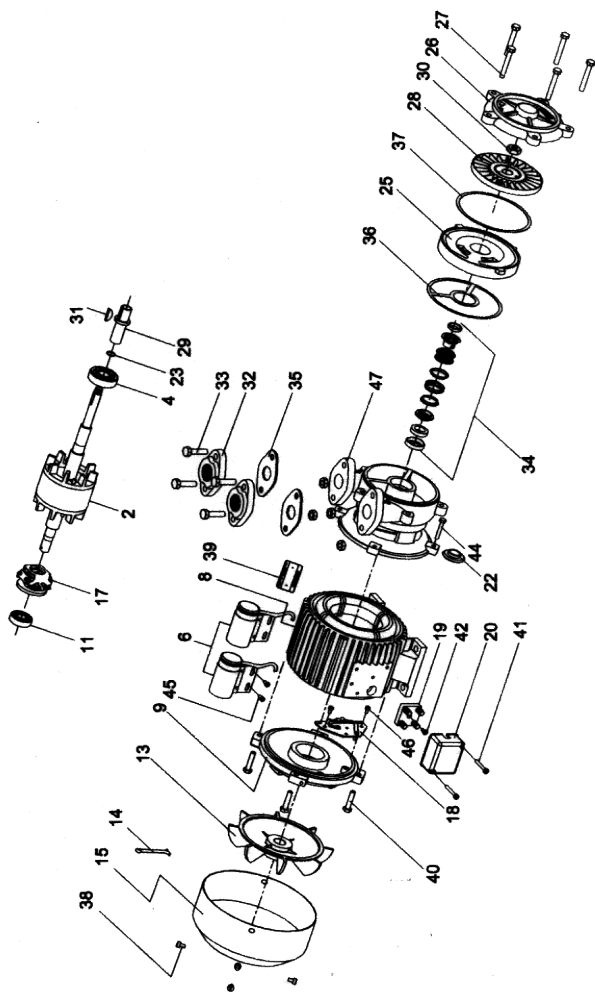
5. Do not throttle the delivery line using a gate-valve as this will result in over loading of the motor.
6. Initially there will be some noise from the pump. This noise will disapper after a few hours of running.
7. Correct delivery pipe size 1" should be used to prevent excessive frictional loss and over-loading. If used with ½" or ¾" delivery pipe monoblock gets over loaded.
8. If the Monoblock is kept idle for more than 200 days the capacitor will need reforming. Reforming can be done by switching the power supply on and off quickly about 10 times before starting the monoblock.
9. Ventilation gap should be provided in cooling cover side to suck sufficient air to cool the motor frame. Side walls or Covers for the monoblock sholuld not obstruct the cooling air flow. The monoblock should not be covered entirely with polythene, plastic sheets and other materials.

SPARES:

While ordering for spares, the complete name plate details of the monoblock with the required part no. (as per the part list) are to be specified clearly.

BEARING AND CAPACITOR CHART

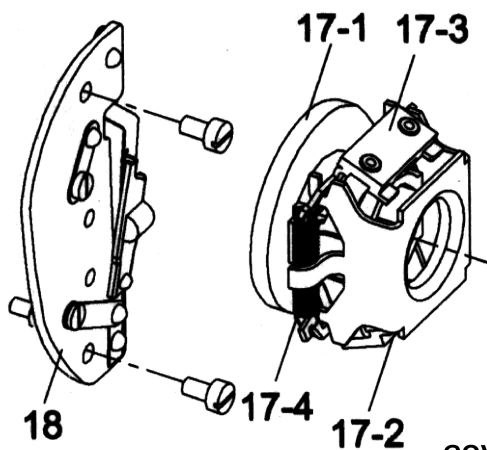
Size	HP	Bearing size		Running Capacitor	Starting Capacitor
		Front	Rear		
DMS 2N	0.5	6304 ZZ	6203ZZ	15 MFD	40-60 MFD
DMS 3N	1.0	6304 ZZ	6203ZZ	25 MFD	80-100 MFD



EXPLODED VIEW FOR SELF PRIMING SIDE CHANNEL MONOBLOCK

Part Number	Part Name	Quantity	Material
2.	Shaft with Rotor	1	Alloy Steel
4.	Front Bearing	1	
6.	Capacitor with Clamp	2	
8.	Motor Frame with Stator	1	Cast Iron
9.	Back Cover	1	Cast Iron
11.	Back Bearing	1	
13.	Cooling Fan	1	Plastic
14.	Split Pin for Cooling Fan	1	Mild Steel
15.	Cooling Cover	1	Cast Iron
19.	Terminal Board	1	Backelite
20.	Terminal Box	1	Plastic
22.	Water Cutting Ring	1	Rubber
23.	Shaft Sleeve "O" Ring	1	Rubber
25.	Volute Casing	1	Cast Iron
26.	Cover Casing	1	Cast Iron
27.	Pump Tie Bolt	5	Mild Steel
28.	Impeller	1	Bronze
29.	Shaft Sleeve	1	Gun Metal
30.	Shaft Sleeve Lock Nut	1	Brass
31.	Key for Impeller	1	Mild Steel
32.	Flange	2	Cast Iron
33.	Bolt with Nut for Flange	4	Mild Steel
35.	Flange Washer	2	Rubber
36.	Gasket for S&D Bracket	1	Gasket Paper
37.	Gasket for Volute Casing	1	Gasket Paper
38.	Screw Cooling Cover	4	Mild Steel
39.	Name Plate	1	Aluminium
40.	Bolt for Back Cover	4	
41.	Terminal Box Cover Screw	2	Mild Steel
42.	Terminal Board Screw	1	Mild Steel
44.	Bolt for suction & delivery Bracket	4	Mild Steel
45.	Capacitor Clamp Screw	2	Mild Steel
46.	Screw with Washer for Starting Switch	2	Mild Steel
47.	Suction & Delivery Bracket		

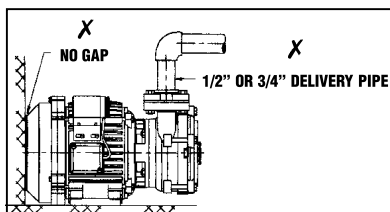
SWITCH



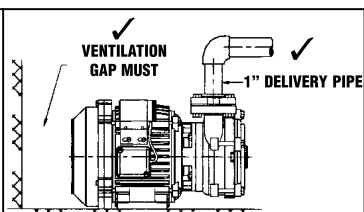
GOVERNOR

CENTRIFUGAL GOVERNOR & SWITCH

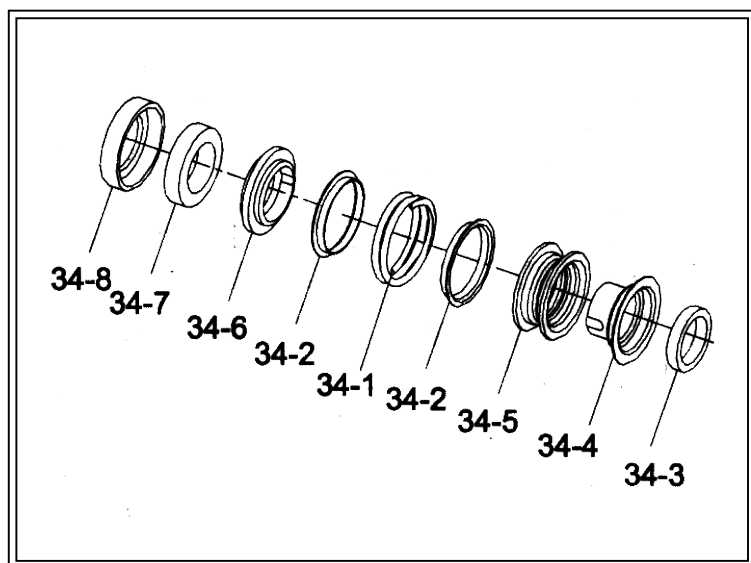
Part Number	Part Name	Quantity	Material
17-1	Governor Spool	1	Backelite
17-2	Governor Base	1	Mild Steel
17-3	Governor Weight	2	Mild Steel
17-4	Governor Spring	2	Spring Steel
18	Starting Switch	1	



WRONG



CORRECT



EXPLODED VIEW FOR MECHANICAL SEAL

Part Number	Part Name	Quantity	Material
34-1	Seal Spring	1	Stainless Steel
34-2	Seal Spring Guide	2	Stainless Steel
34-3	Seal Drive Ring	1	Rubber
34-4	Seal Drive Sleeve	1	Stainless Steel
34-5	Seal Bellow	1	Rubber
34-6	Seal Ring	1	Carbon
34-7	Seal Seat	1	Ceramic
34-8	Seal "L" Ring	1	Rubber

WARRANTY FOR MONOBLOCK:

Aquapump Industries warrants to the purchaser of this TEXMO product, that for a period of 12 months commencing from the date of purchase of the product, Aquapump Industries will repair or replace free of charge any part or parts of the product, should Aquapump Industries be fully satisfied in its sole discretion, that the defect/s is / are due to faulty material or workmanship only. The warranty will be governed by the following clauses:

1. Aquapump Industries or their Authorised Service Agent / Dealer will repair / replace all parts that are failing due to faulty material or defective workmanship pertaining to the above product.
2. Only Aquapump Industries or its Authorised Service Agent / Dealer can service / repair or attend to install / reinstall the above product.
3. All expenses incurred in collecting the units or parts thereof from the Authorised Service Centre or the Dealer of Aquapump Industries as well as expenses incurred in connection with deputing of service personnel / technicians towards to and fro travel conveyance and other incidentals etc., will be borne by the customer.
4. The warranty extended therein is in lieu of all implied conditions and warranties under the law and is confined to the repair or replacement of defective parts and does not cover any consequential or resulting liability, damage or loss arising from such defects. Further more, the warranty in no case, shall extend to the payment or any monetary consideration whatsoever, of the replacement or return of the product as a whole.
5. The warranty is issued subject to jurisdiction of Coimbatore Court of Law.
6. The warranty is covered by Force Majeure clause. In the event if the above product is struck by any natural calamity, this warranty stands null and void.

This Warranty is not valid in case of any of the following events.

- a. This Pumpset is not used according to the instructions given in this Installation and Operation manual.
- b. If the electrical power supply voltage is not within the stipulated norms.
- c. Any repair work / installation carried out by a person other than Aquapump Industries Service Centre / Service Agent.
- d. The serial Number is deleted, defaced or altered.

WARRANTY CARD

(Please retain this for your personal record)

Product Name & Model No. Serial No.

Name and Address of Dealer

Bill No. Date of Purchase

We.f. : 02/2005